

District Council of Mount Barker

**“Utilising Spatial Information to
aid Planning Pressures in
Mount Barker”**

Adelaide Convention Centre

Friday 5th August 2011

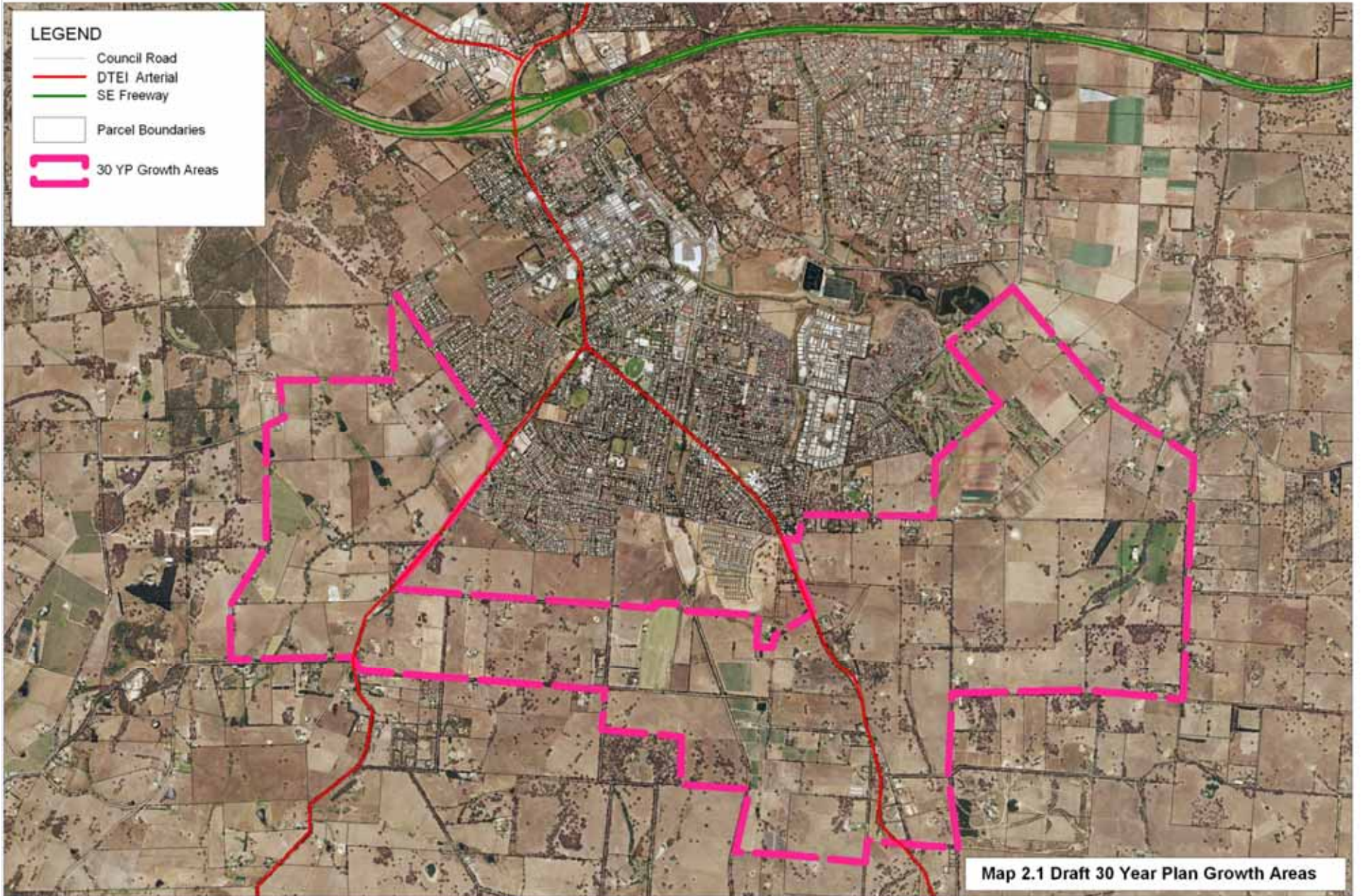
Application of GIS – Responding to the draft 30 Year Plan

- The SA Planning System
 - Development Act – Planning Strategy – Development Plan
- Draft 30 Year Plan – June 2009
 - Context
 - Policy Implications
- Council's Submission
 - Timeframe
 - Content
- Data/Science based public policy – a practitioner's approach

Mount Barker Township

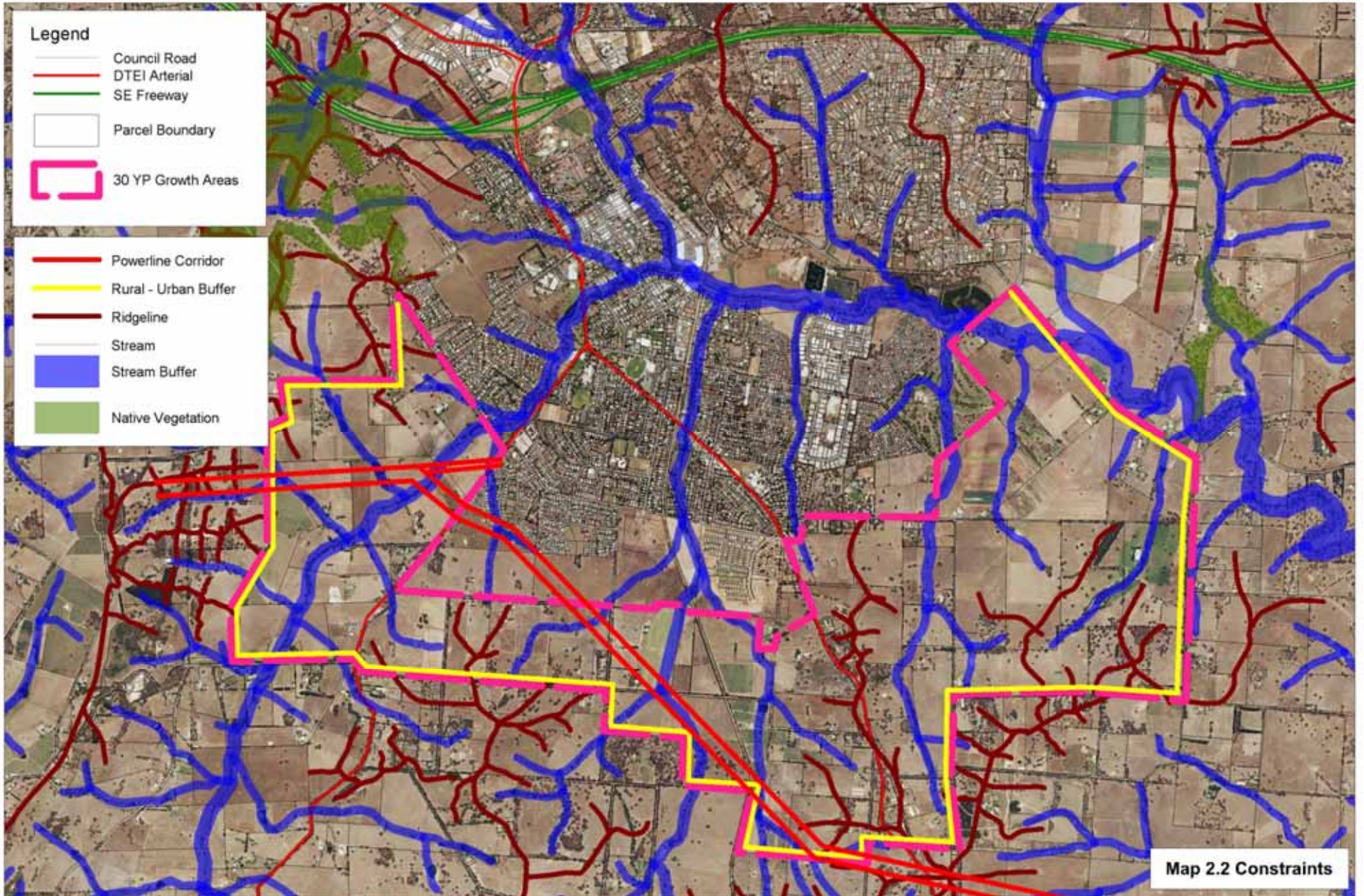
LEGEND

- Council Road
- DTEI Arterial
- SE Freeway
- Parcel Boundaries
- ▭ 30 YP Growth Areas



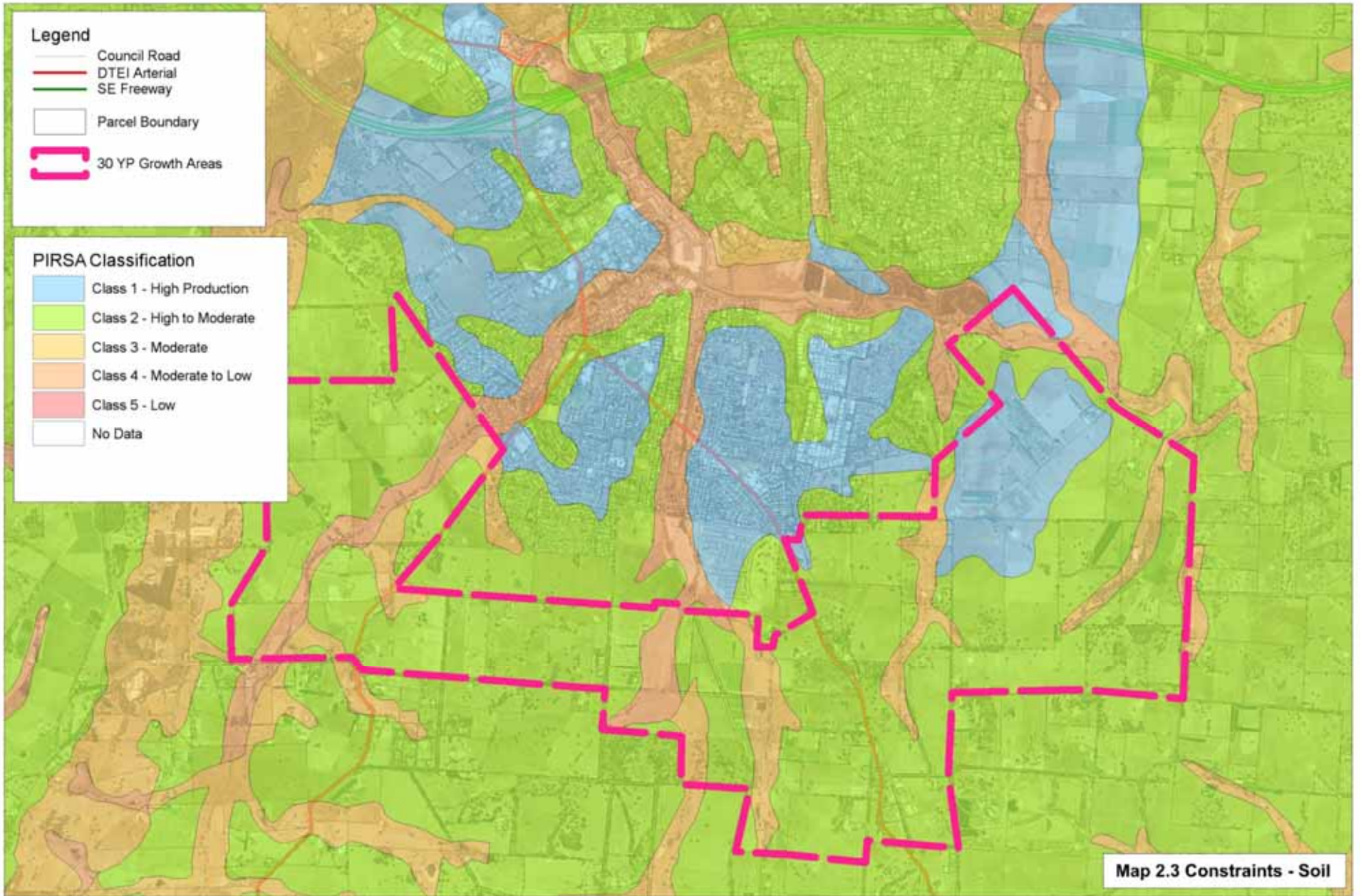
Map 2.1 Draft 30 Year Plan Growth Areas

Mount Barker Township

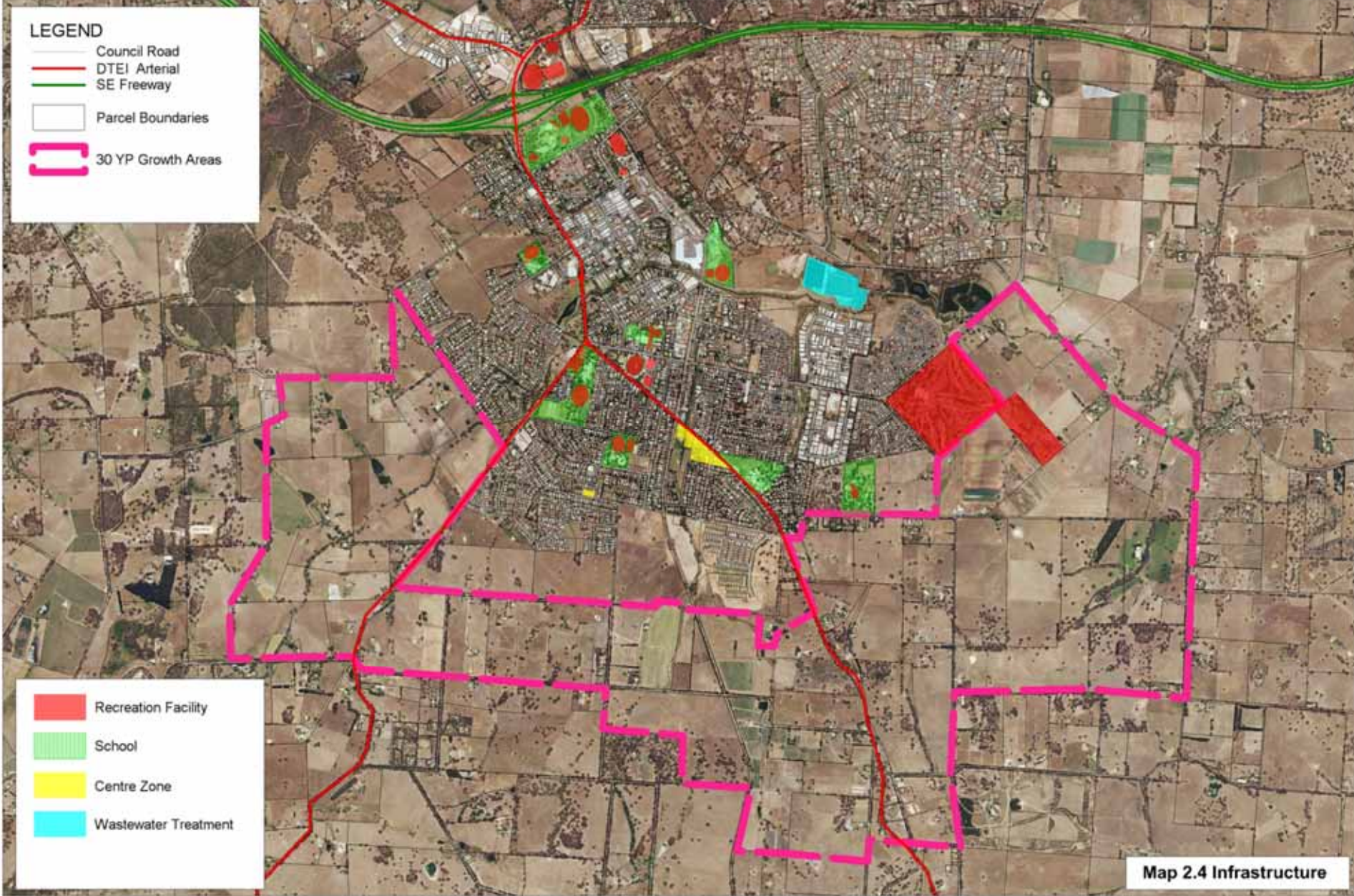


Map 2.2 Constraints

Mount Barker Township

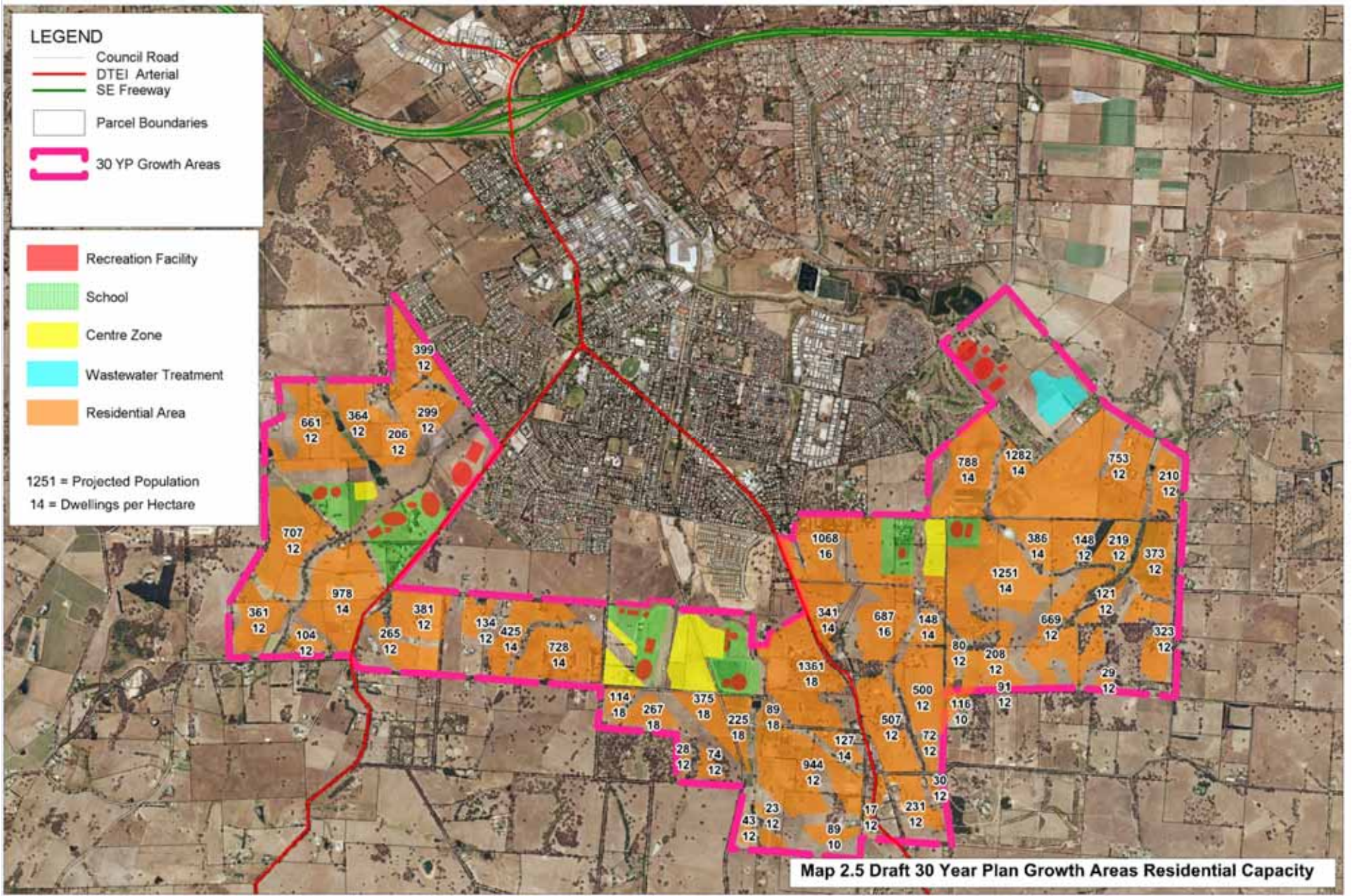


Mount Barker Township



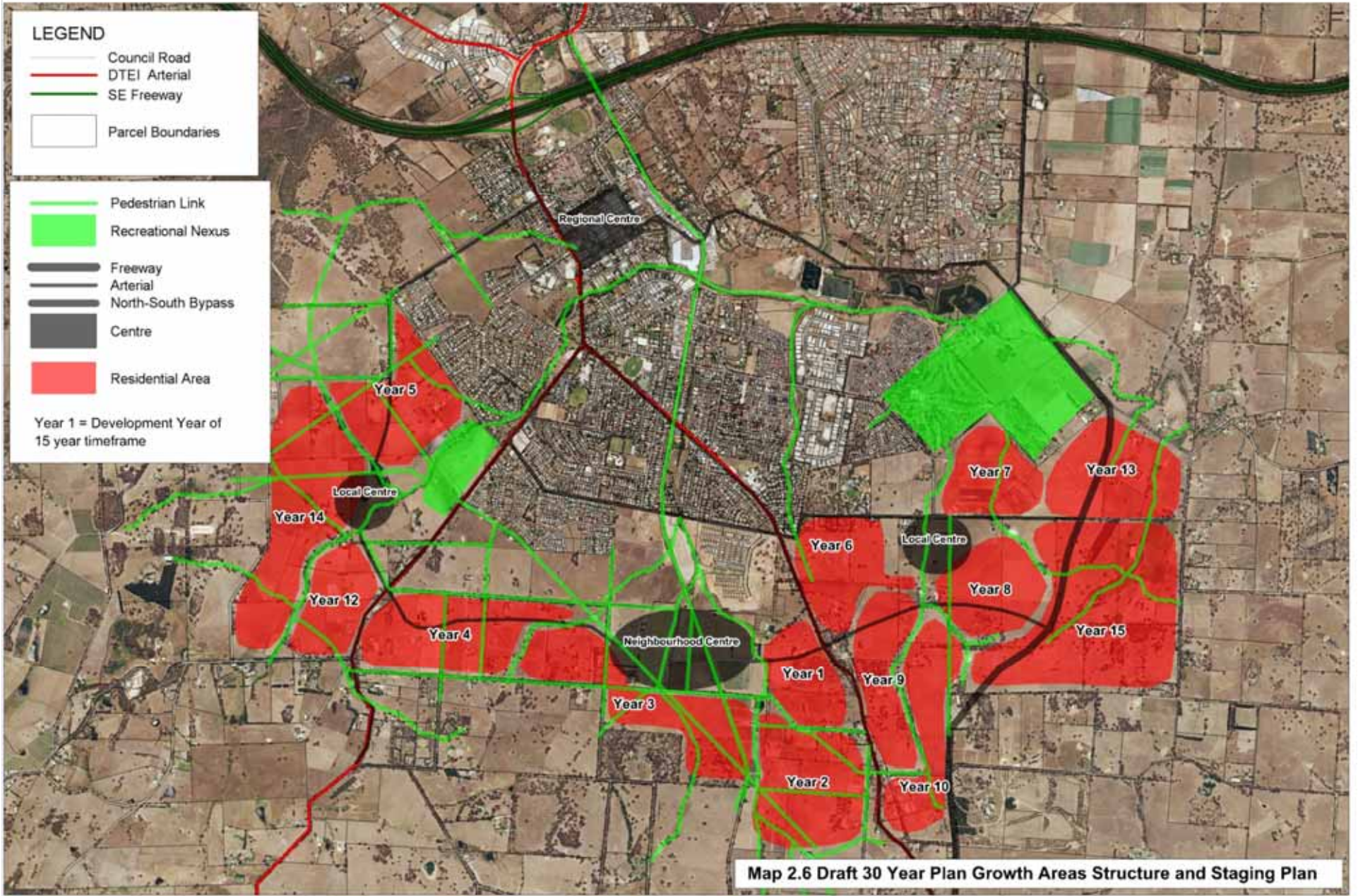
Map 2.4 Infrastructure

Mount Barker Township



Map 2.5 Draft 30 Year Plan Growth Areas Residential Capacity

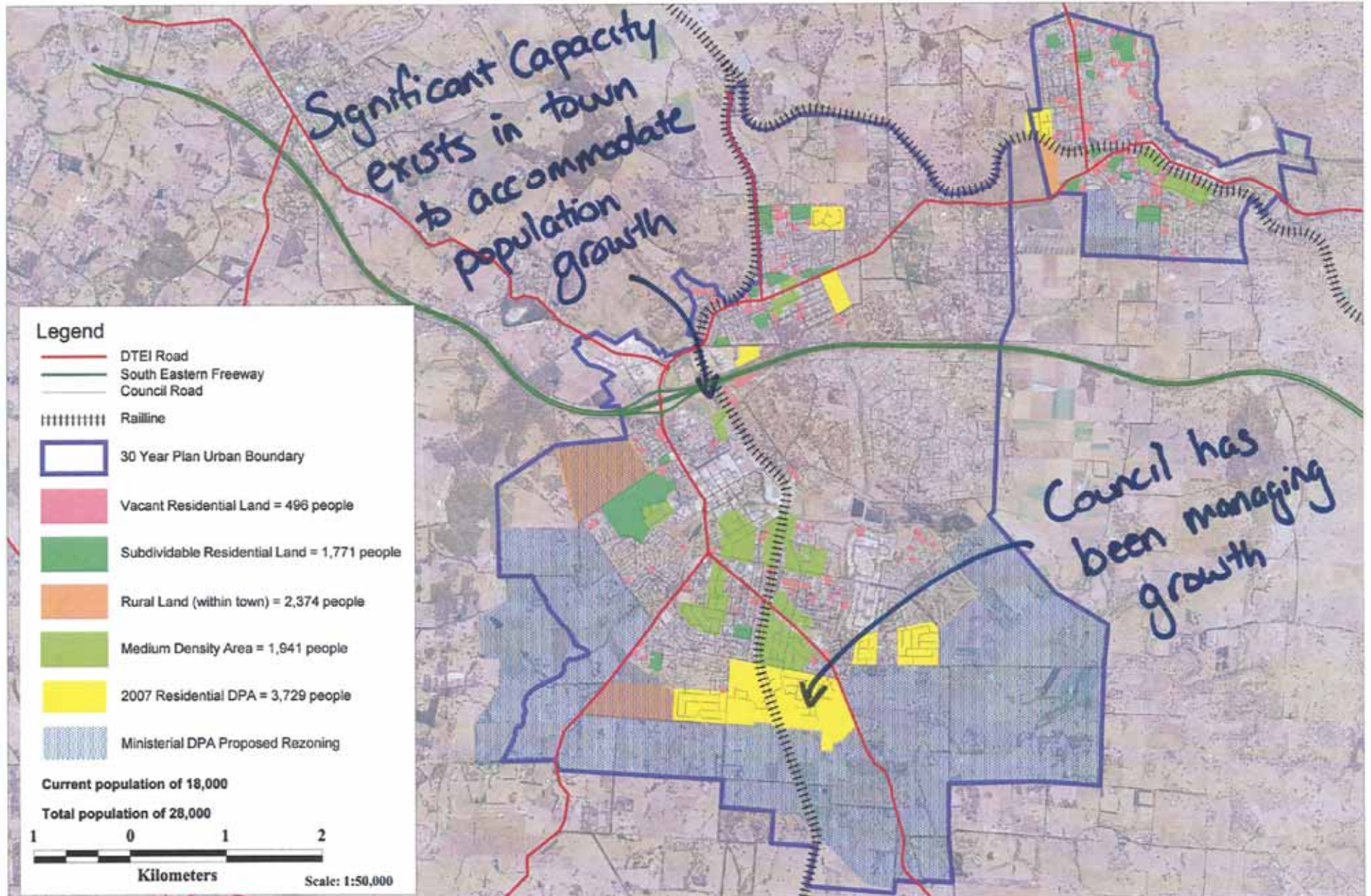
Mount Barker Township



Responding to the Ministerial Mount Barker Urban Growth DPA

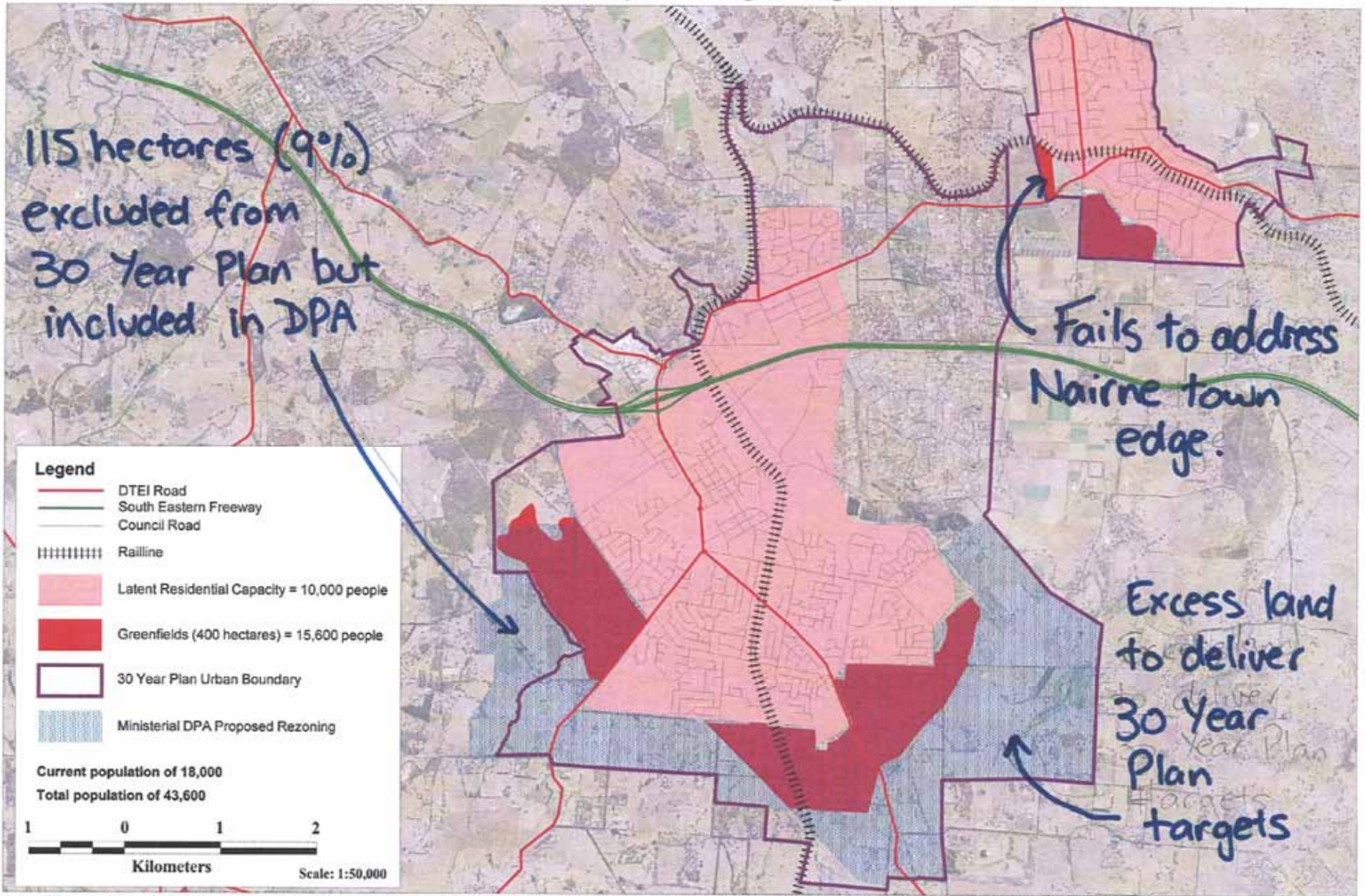
- Released June 2010
- Council's submission
- DPAC presentation

Mount Barker, Littlehampton & Nairne Latent Residential Capacity of 10,000 people



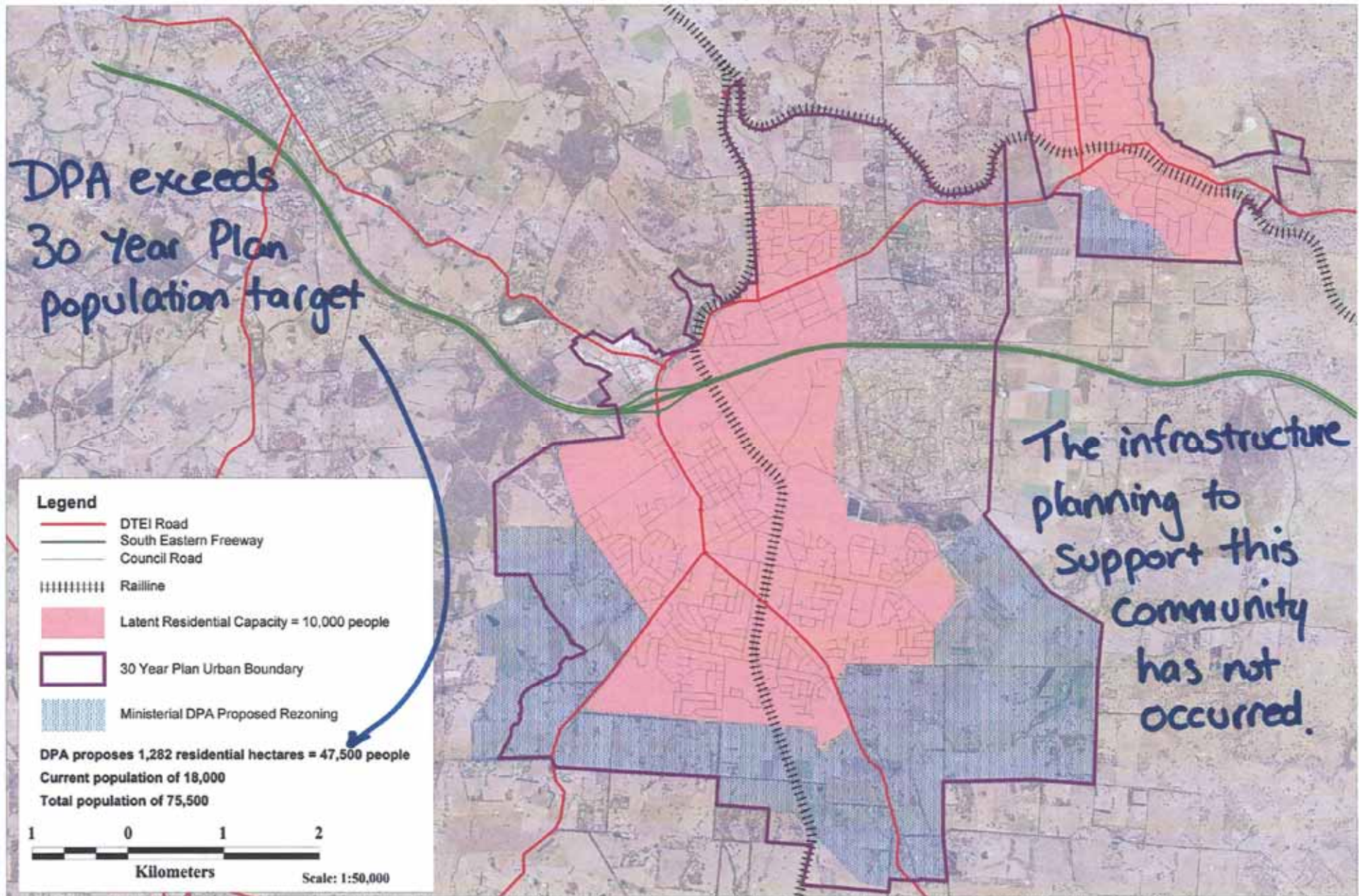
Source DC Mount Barker GIS data and 30 Year Plan policies (page 84). Based on assumptions of 2.62 persons/(residential) dwelling and 1.8 persons/(medium density) dwelling. Existing population in medium density area deducted.

Delivering the 30 Year Plan's 15,600 Population Target through 400 Greenfield Hectares



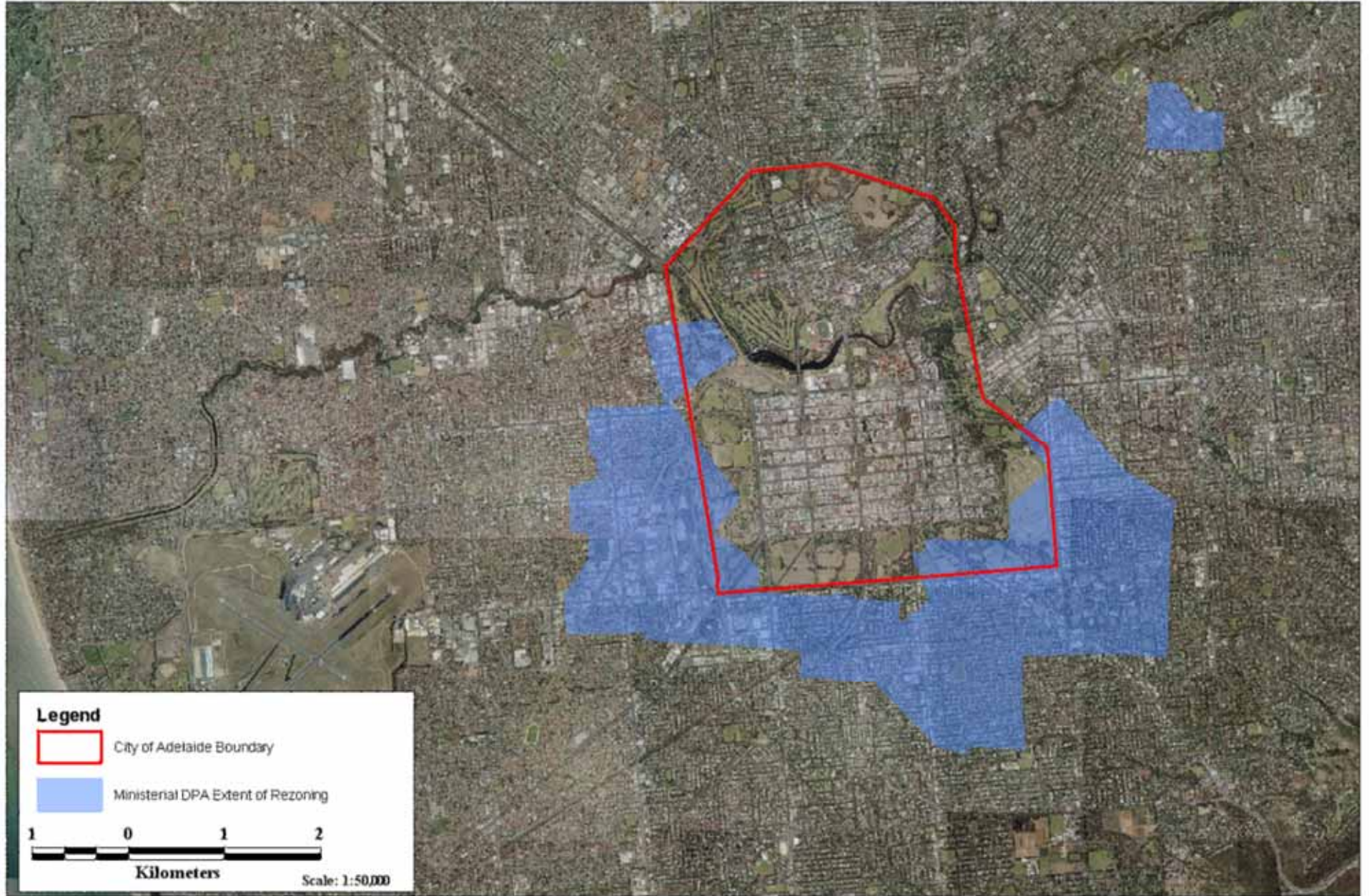
Source DC Mount Barker GIS. 400 hectares based on 15,600 multiplied by 1.25 (30 Year Plan policy of 25% of land never developed), divided by 2.6 persons per dwelling, divided by 19 dwellings per hectare.

Ministerial DPA Rezoning To Deliver Population Growth Of 47,500



Source DC Mount Barker GIS. 47,500 population based on 1,282 residential hectares multiplied by 19 dwellings per hectare, multiplied by 2.6 persons per dwelling, multiplied by 0.75 (30 Year Plan policy of 25% of land never developed).

If The Ministerial DPA Rezoning Applied To The City Of Adelaide



Source DC Mount Barker GIS.

The End